



245 East 50th Street, Suite 4A
New York, NY 10022

Office (212) 421 6408
Fax (212) 371 3279
Email helpdesk@btnewyork.com
Web www.btnewyork.com

No Fee: Converted Two Bedroom with Tree Line Views in Full Service Luxury Condominium

For Rent

World Wide Plaza

393 West 49th Street

2-Y

Size: 1 Bedroom - 1 Bath

Unfurnished \$3,150

Furnished \$3,150

Apartment Features:

Residence 2-Y is a Converted Two Bedroom, One Bathroom at approx 600 sqft. It features hardwood floors throughout and oversized windows with a sunny northern tree-line exposure that brightens the unit. The spacious living area lends itself well to lounging. The galley kitchen is fully equipped with full-sized fridge, stove and dishwasher. The master bedroom has ample closet space, and the bathroom has a soaking tub. It is a perfect place to call home. Call now for a private viewing!

Building Features:

Worldwide Plaza is a financially strong condo that allows for pied a tier, parental purchasing & subletting. Built in 1988 with 187 units in 7 floors, this full service luxury bldg features 24-hour doorman, concierge, live-in super, private garden, laundry room, bike room, public plaza, garage, TMPL gym & is FIOS-ready.

For More Information Please Call:

Corazon Rivera

O:212-421-6408 & C:917-751-8851

Email: cora@btnewyork.com

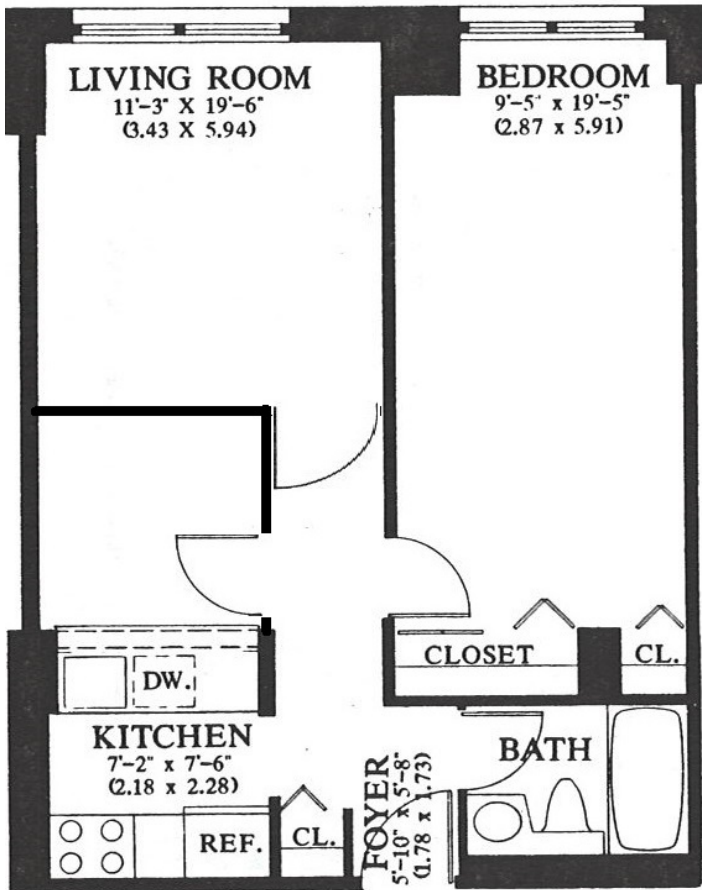
JR Rivera

O:212-421-6408 & C:917-848-1623

Email: jr@btnewyork.com



Floor Plan





245 East 50th Street, Suite 4A
New York, NY 10022

Office (212) 421 6408
Fax (212) 371 3279
Email helpdesk@btnewyork.com
Web www.btnewyork.com



Bona Tierra New York Corp is a licensed real estate broker in the state of New York and is for Equal Housing Opportunity. All material presented herein is intended for information purposes only. All information furnished regarding property for sale, rent or financing is from sources deemed reliable, but no warranty or representation is made as to the accuracy thereof and same is submitted subject to errors, omissions, change of price, rental or other condition, prior sale, lease or financing, or withdrawal without notice. All square footage are approximate unless otherwise indicated and information, including, but not limited to dimensions, photographs, room count, number of bedrooms and the school district in property listings are deemed reliable but should be verified by your own attorney, architect, or zoning expert. As a precondition to your accepting and sharing this listing you agree not to advertise it at anytime without prior written permission.