



245 East 50th Street, Suite 4A
New York, NY 10022

Office (212) 421 6408
Fax (212) 371 3279
Email helpdesk@btnewyork.com
Web www.btnewyork.com

No-Fee! Rare Loft Studio with Balcony in Upper East Side Condominium

For Rent

Beekman Condominium

350 East 62nd Street

2-D

Size: Loft Studio - 1 Bath

Offered At \$2,200

Apartment Features:

This awe-inspiring 600 sqft loft in the Upper East Side has all the makings of a classic New York City home. The light will always be picturesque as the sun pours through over-sized windows and bounces off of 14-foot high ceilings. Enjoy inspiring city views on your own private balcony where you can lounge with your morning breakfast. Walk up to your private abode on the sleeping loft that comes with four large closets. The kitchen has great counter space, generous pantry storage and is fully equipped with dishwasher, oven and full sized fridge. Schedule a private viewing today!

Building Features:

The Beekman Condominium has six floors and 93 units in 1987. It features a 24-hour doorman, a live-in super, laundry and is FIOS ready. It is located steps away from eight subway lines, Roosevelt Island Tram, Whole Foods, Bed Bath & Beyond, Bloomingdale's, and much more.

For More Information Please Call:

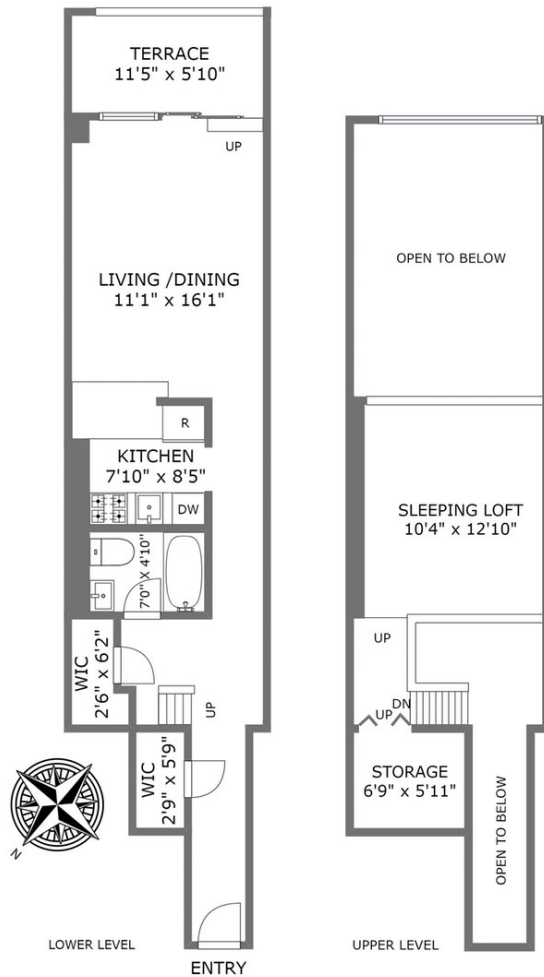
JR Rivera

O:212-421-6408 & C:917-848-1623

Email: jr@btnewyork.com



Floor Plan



SIZES AND DIMENSIONS ARE APPROXIMATE, ACTUAL MAY VARY.





245 East 50th Street, Suite 4A
New York, NY 10022

Office (212) 421 6408
Fax (212) 371 3279
Email helpdesk@btnewyork.com
Web www.btnewyork.com



Bona Tierra New York Corp is a licensed real estate broker in the state of New York and is for Equal Housing Opportunity. All material presented herein is intended for information purposes only. All information furnished regarding property for sale, rent or financing is from sources deemed reliable, but no warranty or representation is made as to the accuracy thereof and same is submitted subject to errors, omissions, change of price, rental or other condition, prior sale, lease or financing, or withdrawal without notice. All square footage are approximate unless otherwise indicated and information, including, but not limited to dimensions, photographs, room count, number of bedrooms and the school district in property listings are deemed reliable but should be verified by your own attorney, architect, or zoning expert. As a precondition to your accepting and sharing this listing you agree not to advertise it at anytime without prior written permission.